

# M880

# ZED NJ



## Synthesis of functionality

ZED NJ is characterized by the low handle, designed specifically for applications that require only selectors, buttons and potentiometers ensures maximum ergonomics and accessibility of actuators even with work gloves.

## Technical data

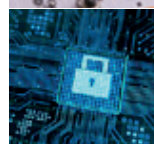
Dimensions (L.W.A.)	214 x 107 x 162 mm / 8.42 x 4.21 x 6.38 in	
Weight (battery included)	1000 g / 2,20 lb	
Max number of ON/OFF commands	32	
Max number of analog commands (optional)	8	
Range	100 m / 330 ft	
Casing material	Charged Nylon UL94 HB	
Battery	NiMH 3,6V - 2,2Ah	
Autonomy at 20°C with charged battery in continuous service	≈ 22 hours	
STOP	PLe Cat.4/SIL3	
UMFS protection	JOYSTICK	PLd Cat.3/SIL3
	SELECTOR LEVER - BUTTON	PLc Cat.2/SIL2
Operating frequency 1	I.S.M. Band 433.050-434.790 MHz 69 ch.	
Operating frequency 2	I.S.M. 434.040-434.790 MHz 30 ch.	
Operating frequency 3	2,4 GHz, 38 ch.	
Operating frequency 4	I.S.M. Band 863.100-869.850 MHz 32 ch.	
Operating frequency 5	Band 915.200-927.800 MHz 64 ch.	
Color graphic display (optional)	4,3"	
Operating and storage temperature	-25°C +55°C / -13°F +133°F	
Degree of protection	IP 65	

## Details



### STATUS LEDS

Signaling operating status, battery charge level and anomaly messages.



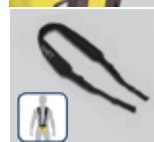
### PIN CODE

Access PIN code can be programmed to restrict the use to authorized personnel.



### STOP

Highest level of safety according to international standards.



### ERGONOMIC BELTS

Comfortable support belts.



### BATTERY CHARGER BATTERIES

Fast charger and extractable rechargeable NiMH batteries for extra long duration.

## Options

Truck cranes retrofit kit, Tilt-Sensor, Serial Cable, MTRS, Kapta, Twin B, Backlit transmitter panel.