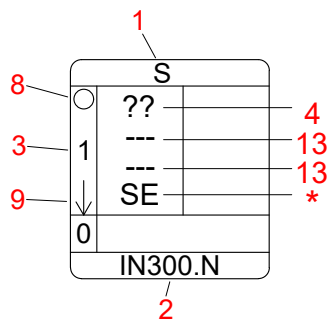
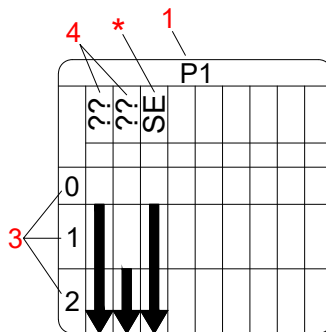


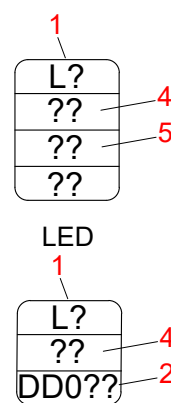
PULSANTE SINGOLO STEP
SINGLE STEP PUSH BUTTON



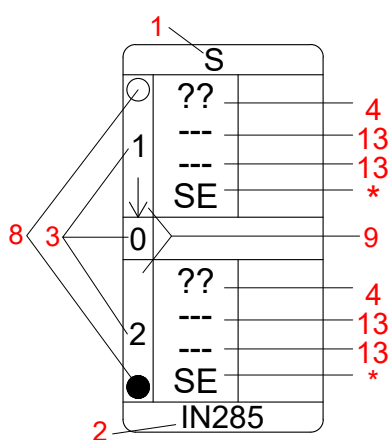
PULSANTE DOPPIO STEP
DOUBLE STEP PUSH BUTTON



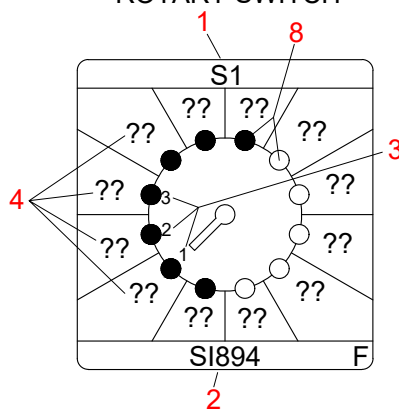
LED
DD200



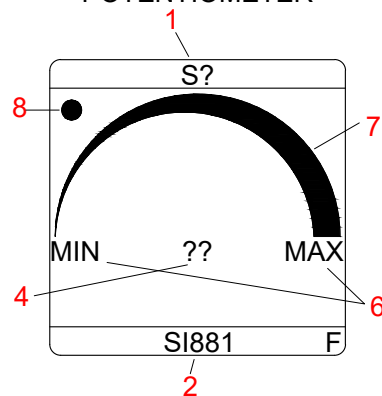
INTERRUTTORE A LEVETTA
TOGGLE SWITCH



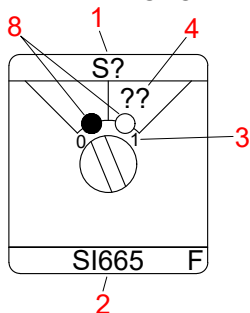
COMMUTATORE ROTATIVO
ROTARY SWITCH



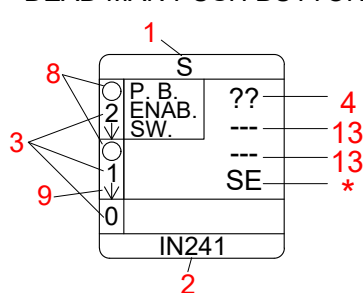
POTENZIOMETRO
POTENTIOMETER



SELETTORE A CHIAVE
KEY SELECTOR



PULSANTE UOMO MORTO
DEAD MAN PUSH BUTTON



* Indicazione del relè (Safety Enable) che si attiva in contemporanea al comando.
Vedere manuale d'installazione uso e manutenzione per indicazioni sul corretto utilizzo della funzione

- 1: Nome componente
- 2: Codice articolo
- 3: Posizione del componente
- 4: Comando attivato in RX
- 5: Colore LED
- 6: Valore proporzionale
- 7: Tipo di scala proporzionale
- 8: ○ Non permesso allo start, ● Permessato allo start
- 9: Comando (stabile, instabile)
- 13: Funzioni aggiuntive (Set/Reset, Toggle, tempo, ecc.)

* Indication of (Safety Enable) relay that activates simultaneously with the command.
Refer to the installation, use, and maintenance manual for instructions on the correct use of the function.

- 1: Component name
- 2: Item code
- 3: Component position
- 4: Command activated in RX
- 5: LED color
- 6: Proportional value
- 7: Proportional scale type
- 8: ○ Not permitted at the start, ● Permitted at the start
- 9: Command (stable, unstable)
- 13: Additional functions (Set/Reset, Toggle, time, etc.)